

IES-2042PA

➤ **Industrial 6-port slim type lite-managed Ethernet switch with 4x10/100Base-T(X) and 2x100Base-FX, SFP socket**

Features

- Fastest Redundant Ethernet Ring : **O-Ring** (recovery time < 10ms over 250 units of connection)
- **Open-Ring** support the other vendor's ring technology in open architecture
- Supports 4 ports 10/100Base-T(X) and 2 ports 100Base-FX SFP Port
- SNMP v1/v2c/v3 , http server, telnet server support
- Web-based interface, telnet server and Windows utility (**Open-Vision**) configuration
- Event notification through Syslog, Email, SNMP trap, and relay
- Provides Web / Windows Utility / DIP-Switch function to set Ring
- Rigid IP-30 housing design
- DIN-Rail and wall mounting enabled
- Supports LLDP Protocol

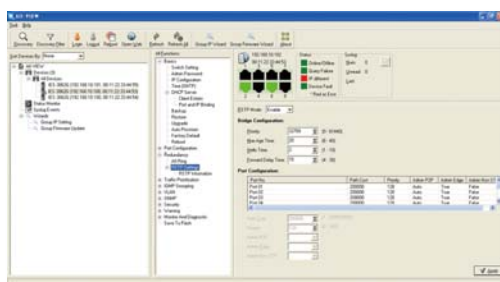
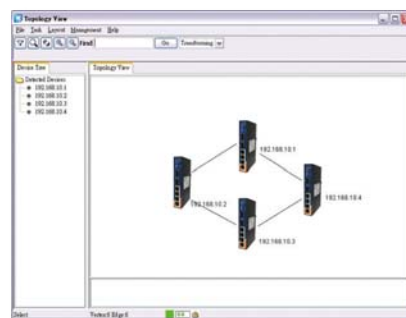
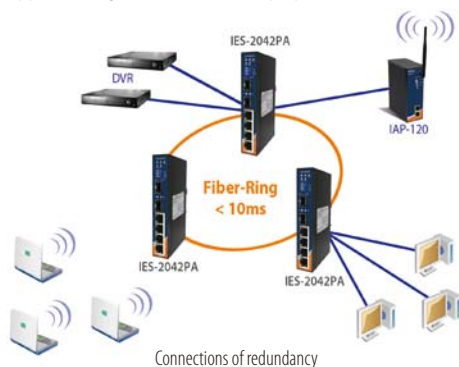


Introduction

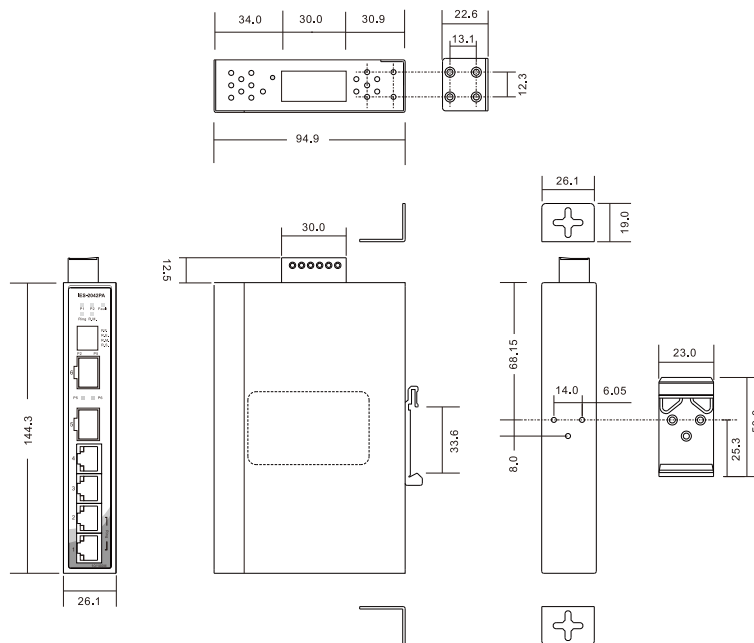
IES-2042PA is a Lite-Managed Redundant Ring Ethernet switch. With very compact size of housing, you can install IES-2042PA easily. In addition, it also supports of Ethernet Redundancy protocol, O-Ring (recovery time < 10ms over 250 units of connection) and Open-Ring can protect your mission-critical applications from network interruptions or temporary malfunctions with its fast recovery technology. IES-2042PA provides the setting ability of Web-GUI and Windows Utility, also support the simple DIP-Switch setting function which offers great flexibility to set up the Ring. With it's rigid IP-30 housing design, it can operate under harsh environment. The feature of wide operating temperature range from -40 to 70°C can satisfy most requirement of operation.

Open-Vision

IES-2042PA can be used in connecting several Ethernet devices like Ethernet I/O, IP-Camera or other Ethernet switches. In addition, O-Ring redundant technology is supported to guarantee a non-stop operation.



Dimensions



(Unit=mm)

Specifications

| ORing Switch Model | IES-2042PA |
|---|---|
| Physical Ports | |
| 10/100Base-T(X) Ports in RJ45 Auto MDI/MDIX | 4 |
| 100Base-FX SFP Ports | 2 |
| Technology | |
| Ethernet Standards | IEEE 802.3 for 10Base-T IEEE 802.3u for 100Base-TX and 100Base-FX IEEE 802.3x for Flow control IEEE 802.1D for STP (Spanning Tree Protocol) IEEE 802.1w for RSTP (Rapid Spanning Tree Protocol) IEEE 802.1AB for LLDP (Link Layer Discovery Protocol) |
| MAC Table | 2048 MAC addresses |
| Priority Queues | 4 |
| Processing | Store-and-Forward |
| Switch Properties | Switching bandwidth : 1.2Gbps VLAN : Port Based |
| Security Features | Enable/disable ports VLAN to segregate and secure network traffic |
| Software Features | STP/RSTP (IEEE 802.1D/w) Redundant Ring (O-Ring) with recovery time less than 10ms over 250 units DHCP Client Port base VLAN LLDP (Link Layer Discovery Protocol) Port configuration, status, statistics, monitoring, security SNMP v1/v2c/v3 and private MIB support |
| Network Redundancy | O-Ring Open-Ring Fast recovery STP RSTP |
| DIP-Switch Setting | |
| P.F. | When power fault enable relay warning system (On : Enable, Off : Disable function) |
| R.E. | Enable/Disable O-Ring function (On : Enable, Off : Disable) |
| R.M. | Enable/Disable Ring Master Mode (On : Enable, Off : Disable) |
| R.S. | O-Ring redundant port select (On : ring port set to port-5 and port-6, Off : ring port set to port-1 and port-2) |

| LED Indicators | |
|-------------------------------------|--|
| Power Indicator | Green LED x 2 |
| 10/100Base-T(X) RJ45 Port Indicator | Green for port Link/Act. Amber for Link |
| 100Base-FX SFP Port Indicator | Green for port Link/Act |
| R.M. Indicator | Green : Indicates that the system is operating in O-Ring Master mode |
| O-Ring Indicator | Green : Indicates port operated in O-Ring mode |
| Fault Indicator | Amber : Indicates unexpected event occurred |
| Fault Contact | |
| Relay | Relay output to carry capacity of 1A at 24VDC |
| Power | |
| Input Power | Dual 12~48 VDC power input at 6-pin terminal block |
| Power Consumption (Typ.) | 7 Watts |
| Overload Current Protection | Present |
| Reverse Polarity Protection | Present |
| Physical Characteristics | |
| Enclosure | IP-30 |
| Dimensions (W x D x H) | 26.1 mm (W) x 95 mm(D) x 144.3 mm(H) |
| Weight (g) | 395 g |
| Environmental | |
| Storage Temperature | -40 to 85°C (-40 to 185°F) |
| Operating Temperature | -40 to 70°C (-40 to 158°F) |
| Operating Humidity | 5% to 95% Non-condensing |
| Regulatory Approvals | |
| EMI | FCC Part 15, CISPR (EN55022) class A |
| EMS | EN61000-4-2 (ESD), EN61000-4-3 (RS), EN61000-4-4 (EFT), EN61000-4-5 (Surge), EN61000-4-6 (CS), EN61000-4-8, EN61000-4-11 |
| Shock | IEC60068-2-27 |
| Free Fall | IEC60068-2-32 |
| Vibration | IEC60068-2-6 |
| Safety | EN60950-1 |
| Warranty | 5 years |

Ordering Information

IES-2 **AA** **B** **CA**

| Code Definition | 10/100Base-T(X) Port Number | Additional Port Number | Additional Port Type |
|-----------------|-----------------------------|------------------------|----------------------------------|
| Option | - 04 : 4 ports | - 2 : 2 port | - P : 100Base-FX SFP port |

| Available Model | Model Name | Description |
|-----------------|------------|--|
| | IES-2042PA | Industrial 6-port slim type lite-managed Ethernet switch with 4x10/100Base-T(X) and 2x100Base-FX, SFP socket |

Packing List

- IES-2042PA
- DIN-Rail Kit
- Wall-mount Kit
- ORing Tool CD
- Quick Installation Guide

Optional Accessories (Can be purchased separately)

- Open-Vision M500, Powerful Network Management Windows Utility Suite, 500 IP devices
- SFP100 series, 100Mbps SFP optical transceiver
- DR-45 series, 45W DIN-Rail power supply
- DR-75 series, 75W DIN-Rail power supply
- DR-120 series, 120W DIN-Rail power supply